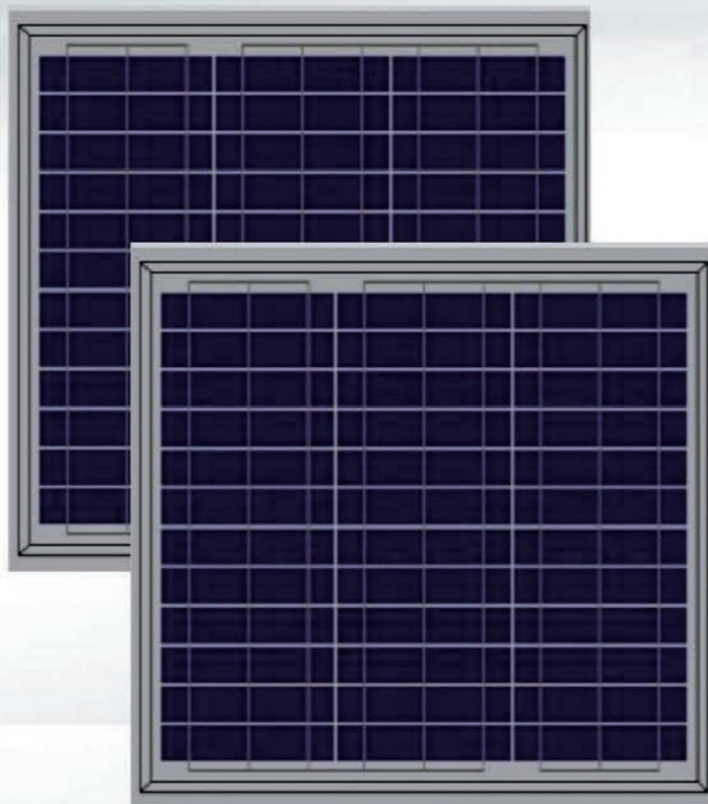




SHS 25W-30W P

Polycrystalline



High conversion efficiency
High module efficiency to guarantee power output.



Self-cleaning glass
Coating glass for self-cleaning, reduce surface dust.



Outstanding low irradiation performance
Excellent module efficiency even in the weak light conditions, such as morning or cloudy.



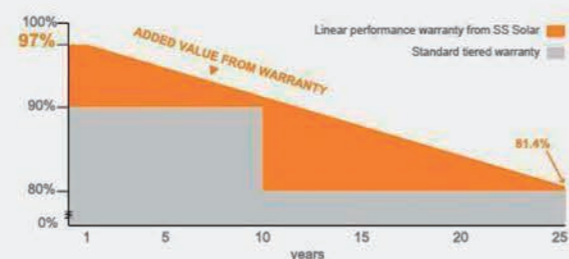
Excellent loading capability
2400Pa wind loads, 5400Pa snow loads.

0 to +3%

0 to +3% positive tolerance
Detailed information in Electrical Specifications.

48

48-hour response service



25 25-year performance warranty

10 10-year warranty on materials and workmanship

ALL SPECIFIED PARAMETERS ARE AT STC 25°C AMBIENT, 1000W/M² IRRADIANCE AND AM 1.5

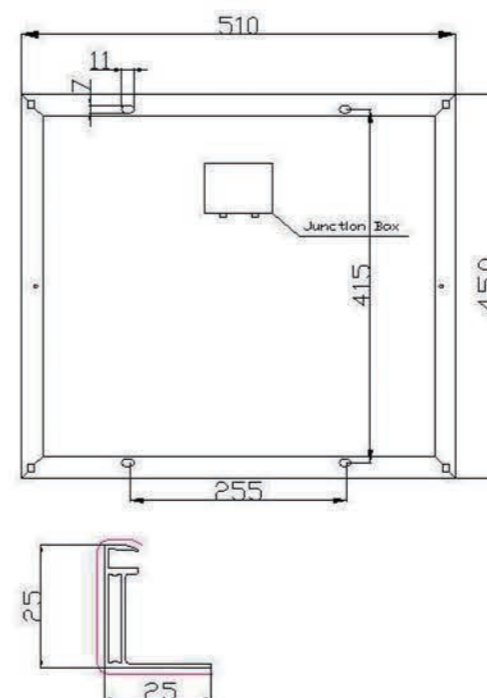
ELECTRICAL SPECIFICATIONS

Model Type	SHS25-36P	SHS30-36P
Max Power	25	30
Power Tolerance	+0~+3%	+0~+3%
Max-Power Voltage (Vmp)	17.2	17.3
Max-Power Current (Imp)	1.45	1.77
Open Circuit Voltage (Voc)	21.6	21.9
Short Circuit Current (Isc)	1.6	1.93
Cell Efficiency (%)	14.7	17.7
Module Efficiency (%)	11.1	13.1
Max-System Voltage (VDC)	600	
Max Series Fuse Rating (A)	10	
Pmax Temperature Coefficiency (%/°C)	-0.47	
Voc Temperature Coefficiency (%/°C)	-0.34	
Isc Temperature Coefficiency (%/°C)	+0.045	
Nominal Operating Cell Temperature (NOCT)	45±2°C	
Operating Temperature	-40~+85°C	

MECHANICAL SPECIFICATIONS

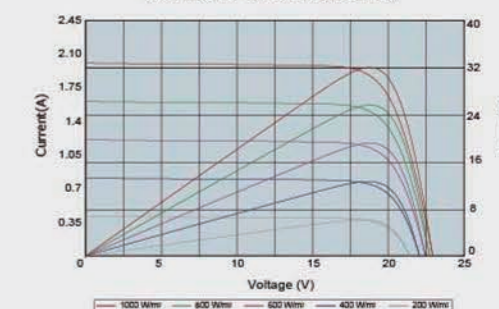
External Dimensions	450*510*25 mm
Weight	3.5 Kg
Solar Cell	Polycrystalline 156x31.2mm (36pcs)
Front glass	3.2mm tempered glass, low iron
Frame	Anodized/Electrophoretic aluminum alloy
Junction Box	Smaller Junction Box Without Diodes
Output Cabel	1.5mm ² 260mm sheath wire
Connector	NA, but customized is acceptable

PHYSICAL CHARACTERISTICS Unit:mm (inch)

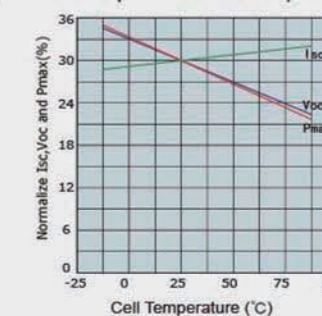


ELECTRICAL CHARACTERISTICS

Current-Voltage & Power-Voltage Curve (AM1.5, Cell Temperature 25°C)



Temperature Dependence of Isc, Voc and Pmax



Irradiance Dependence of Isc, Voc and Pmax

